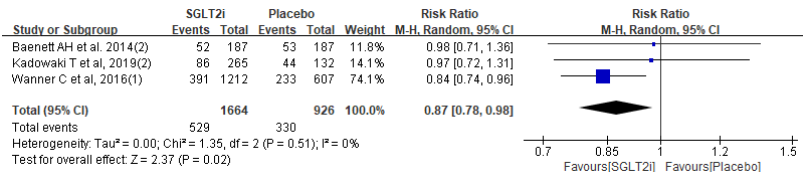
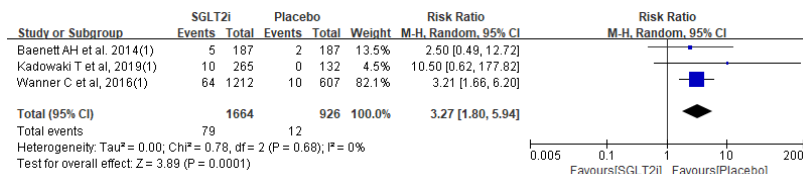


A



B



C

Supplementary Fig. 1. Results of patients with estimated glomerular filtration rate below 60 mL/min/1.73 m². Effect of sodium-glucose cotransporter-2 (SGLT2) inhibitors on (A) change of glycosylated hemoglobin, (B) hypoglycemia, and (C) genital infection. SD, standard deviation; IV, inverse variance; CI, confidence interval.