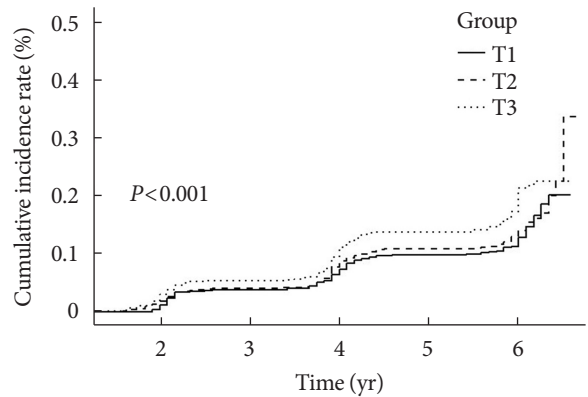
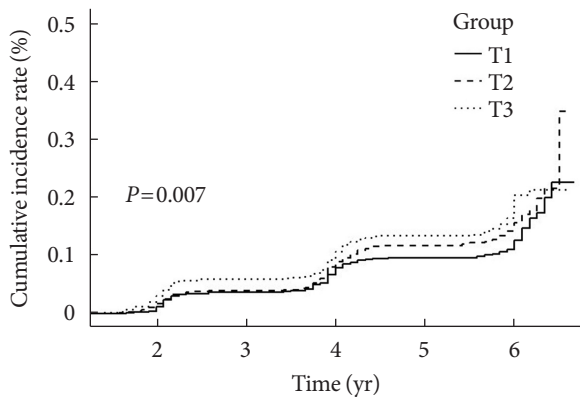


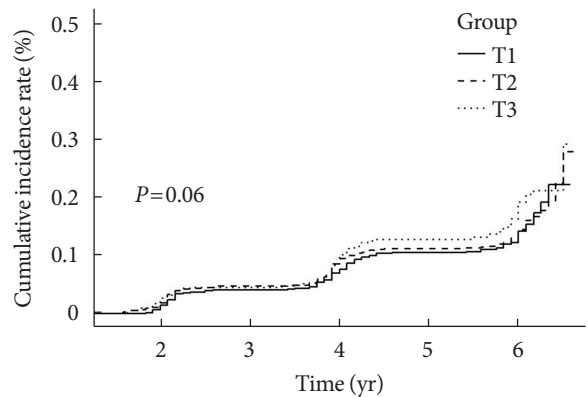
		Numbers at risk				
Group		1,307	1,234	1,148	1,060	501
T1						
T2		1,387	1,316	1,215	1,126	491
T3		1,351	1,245	1,122	1,023	405



		Numbers at risk				
Group		1,357	1,283	1,200	1,109	505
T1						
T2		1,345	1,265	1,149	1,065	471
T3		1,343	1,247	1,136	1,035	421



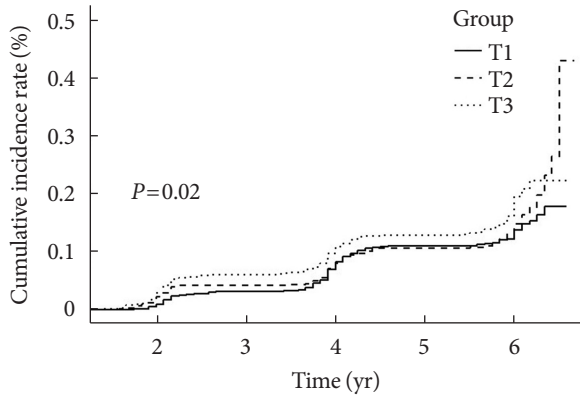
		Numbers at risk				
Group		1,359	1,284	1,196	1,108	522
T1						
T2		1,458	1,376	1,248	1,152	490
T3		1,228	1,135	1,041	949	385



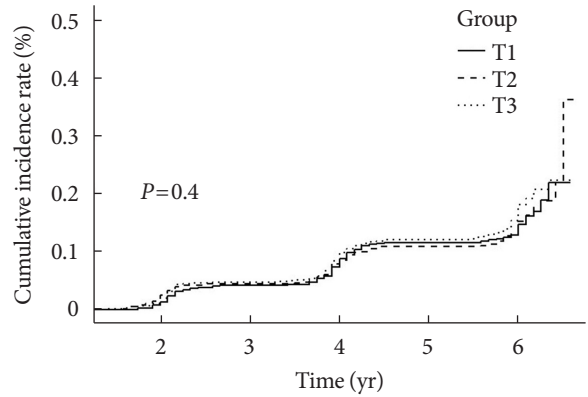
		Numbers at risk				
Group		1,355	1,278	1,182	1,099	485
T1						
T2		1,344	1,252	1,137	1,048	465
T3		1,346	1,265	1,166	1,062	447

Supplementary Fig. 2. Incidence of diabetes according to liver enzyme variability tertile. (A) Aspartate aminotransferase (AST) standard deviation (SD) tertiles. (B) AST coefficient of variation tertiles (CV). (C) AST average successive variability tertiles (ASV). (D) AST variability independent of the mean tertiles (VIM).

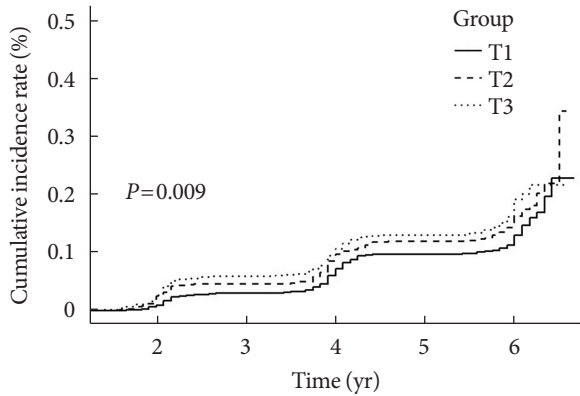
(Continued to the next page)



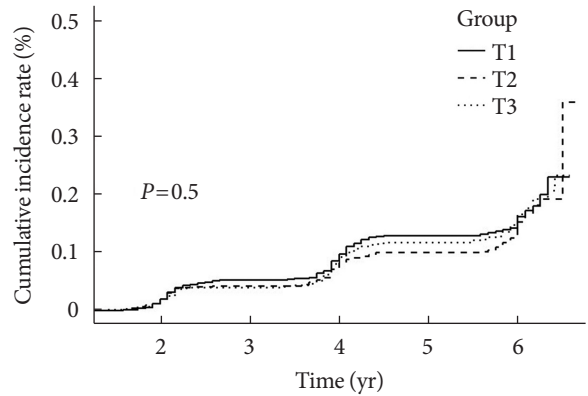
		Numbers at risk				
Group	T1	1,409	1,337	1,226	1,120	508
	T2	1,295	1,217	1,129	1,044	469
	T3	1,341	1,241	1,130	1,045	420



		Numbers at risk				
Group	T1	1,354	1,270	1,165	1,067	461
	T2	1,338	1,261	1,165	1,084	493
	T3	1,353	1,264	1,155	1,058	443



		Numbers at risk				
Group	T1	1,459	1,384	1,282	1,178	526
	T2	1,319	1,236	1,125	1,044	471
	T3	1,267	1,175	1,078	987	400



		Numbers at risk				
Group	T1	1,351	1,259	1,158	1,058	468
	T2	1,345	1,263	1,163	1,088	477
	T3	1,349	1,273	1,164	1,063	452

Supplementary Fig. 2. Continued. (E) Alanine aminotransferase (ALT) SD tertiles. (F) ALT CV tertiles. (G) ALT ASV tertiles. (H) ALT VIM tertiles.